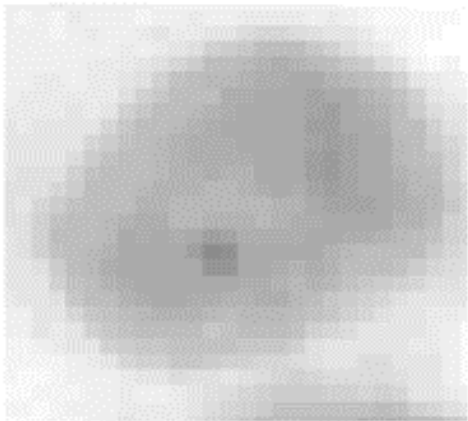
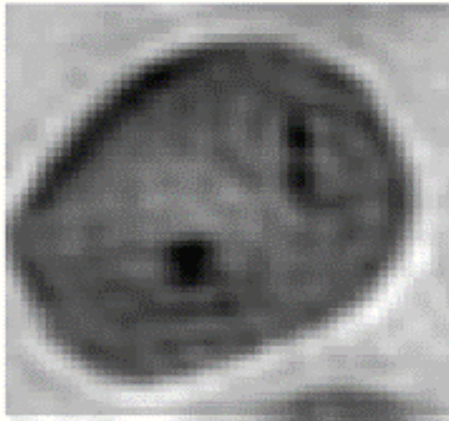
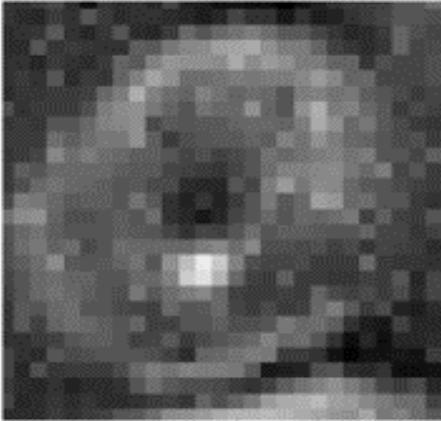
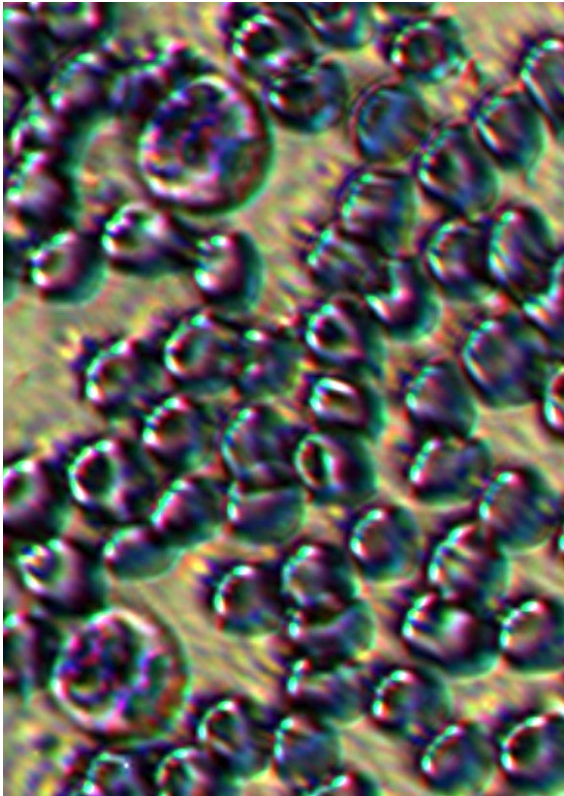


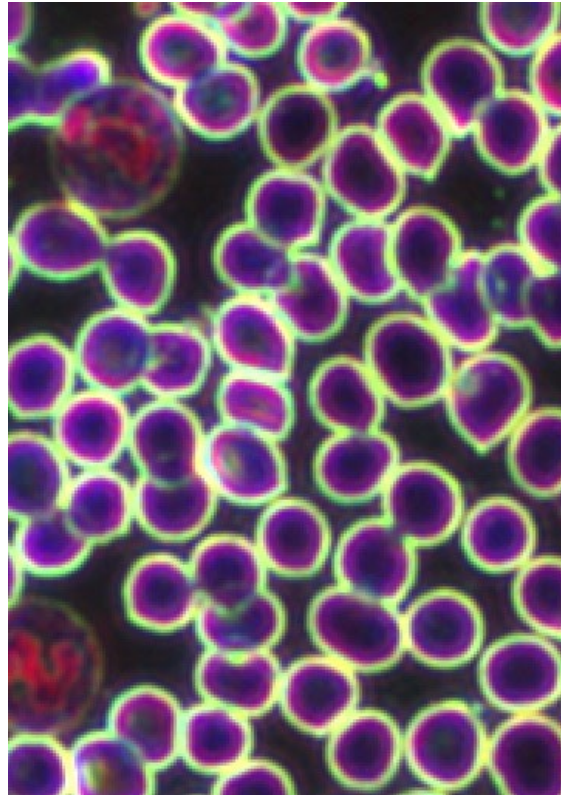
A malaria infected blood cell imaged under various conditions

Our approach enhances the features of interest in low-res images

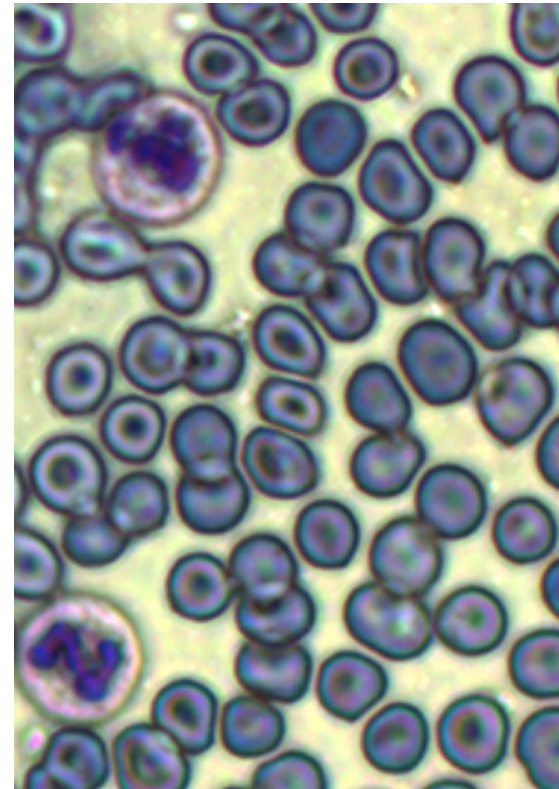
	Traditional Low-Resolution Image	Traditional High-Resolution Image	Low-Resolution image from our system
			
Magnification	20X	100X	20X
Data Capture	Low (~0.4 GB)	High (~10 GB)	Low (~0.4 GB)
ML Accuracy	68.9%	96.8%	94.9%
Equipment Cost	~\$1000	~\$100,000	~\$1000



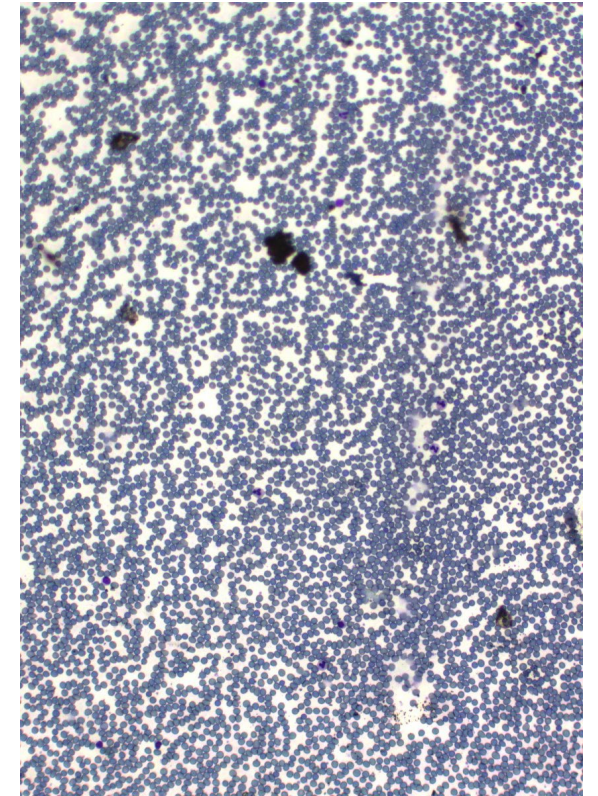
40x Off-axis



40x Dark-field Ring



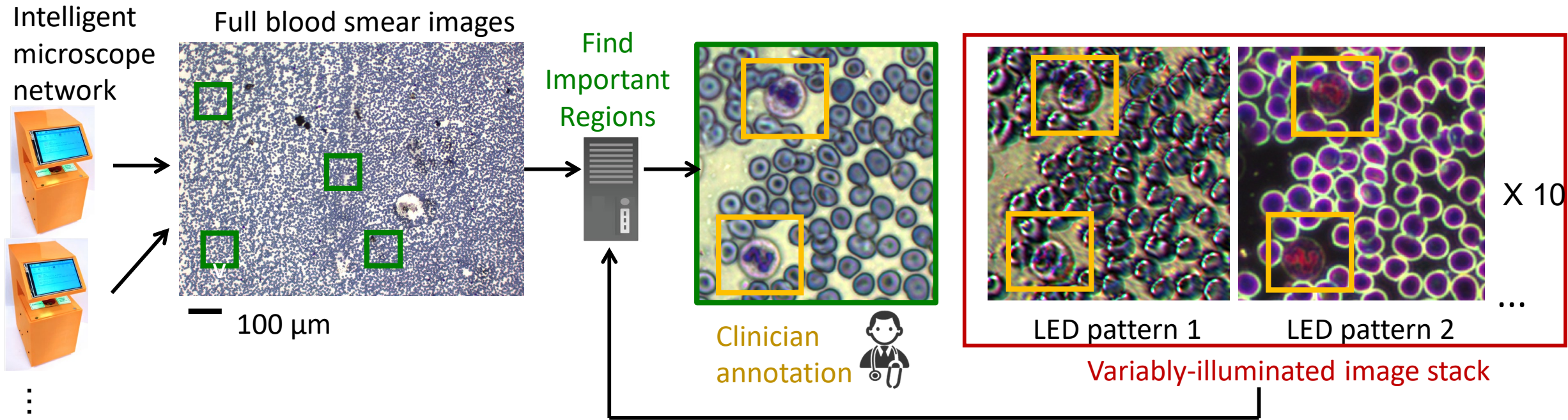
40x Brightfield



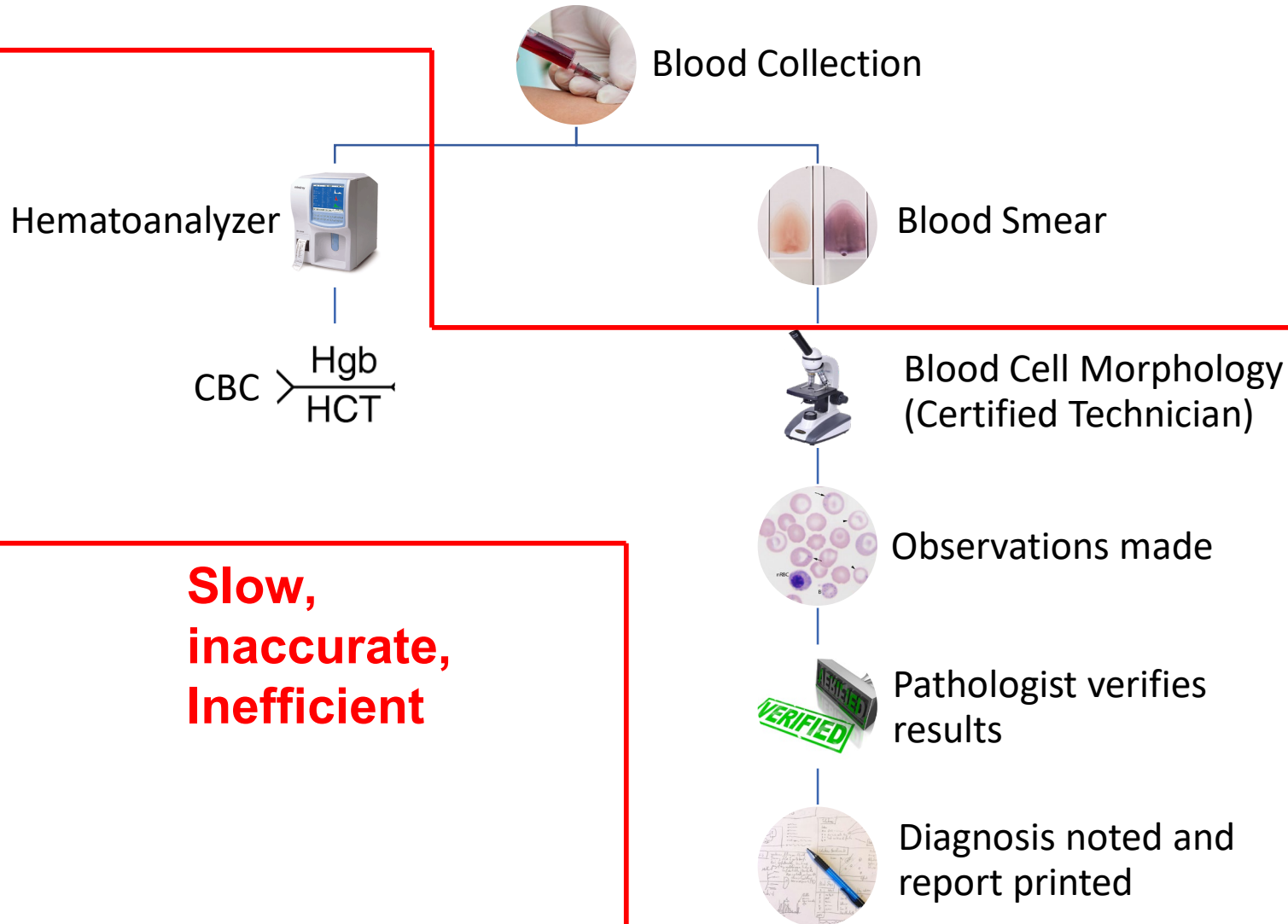
10x Brightfield

Images of the smear obtained under various conditions
(2 different versions of Alpha used for 10x and 40x)

Image cropping figure: show large FOV, and then cropped region, and show the ability to narrow in



Current Workflow



SafineAI Workflow

